

High Voltage DC Contactor

CBVC7 SERIES DC CONTACTOR

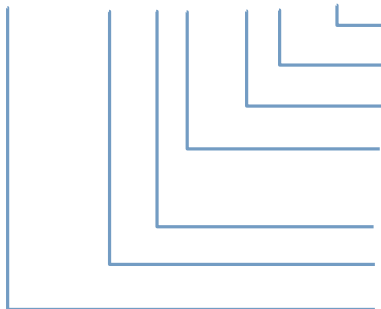


● PRODUCT FEATURES

- **Safety:** The fully sealed structure of epoxy resin is used, and the contacts and coils will not oxidize. The product performance is not affected by external environment, and there is no arc external spraying. It can work in explosive and harmful environments.
- **Reliable:** Adopting DC high voltage polarity free design, with higher breaking capacity and reliability, and convenient and reliable installation/wiring.
- **Environmental protection:** All components comply with the latest EU RoHS environmental requirements.
- **Energy saving:** Adopting PWM control technology to effectively control the power and action characteristics of the control coil, making it more energy-efficient;
- **Purpose:** Charging circuit, auxiliary circuit or main circuit control relay; Can be used for electric vehicles, charging equipment, photovoltaic systems, etc.
- **Certification:** This product has obtained UL certification File No. – E537649.

● Model Description

CBVC7 - 250 T H - P W /XXX



Customer characteristic number

Installation method: (W: horizontal installation structure; omitted: vertical installation structure)

Rated control power supply voltage U_s : (P: 12/24VDC)

Auxiliary contact form: (H: with a set of normally open auxiliary contacts;

C: with a set of normally closed auxiliary contacts; Z: with a set of conversion auxiliary contacts; Nil: without auxiliary contacts)

Contact material: T: Alloy material

Rated current: 250:250A

Internal code of the Company

● BASIC PARAMETERS

Contact Parameters	
Main Contact	
Rated Operational Current I_e	250A (copper bars 75 mm ²) 400A (copper bars 120 mm ²) 500A (copper bars 200 mm ²)
Rated Operational Voltage U_e	12~1000VDC
Minimum Load	1A12VDC
Main Contact Form	1SH (Double Acting Closing Contact)
Main Circuit Resistance	0.2 mΩ (@250A)
Main Contact Installation Method	M8 External Thread
Wiring Installation Torque	10~12N·m
Maximum Switching Current (more than once)	2500A 320VDC
Auxiliary Contact	
Maximum Current	30VDC 2A; 125VAC 3A
Minimum Current	8VDC 100mA
Contact Resistance	<0.15Ω
Coil Parameters	
Rated Voltage U_s	12/24 VDC
Operating Voltage Range	8~36 VDC
Pull-In Voltage	7~8 VDC
Release Voltage	5~6 VDC
Coil Power	Holding: 2W
Starting Current	3A (0.1s) (@12V)
Holding Current	0.17A@12V; 0.085A@24V
Pull-In Time (@Us)	≤45ms
Release Time (@Us)	≤10ms
Action Time (@Us)	≤5ms

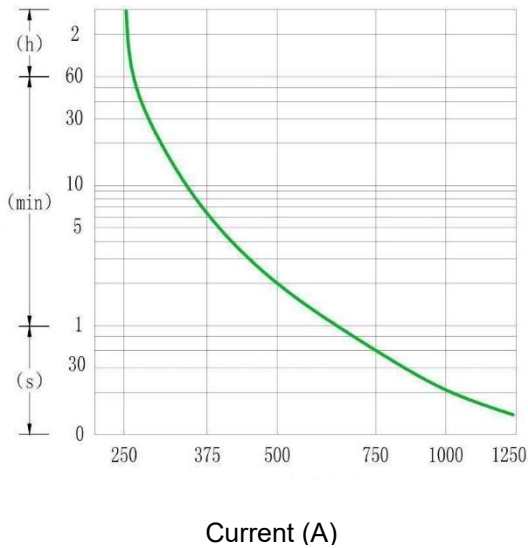
Note:

The above parameters are all rated values at room temperature. If other parameter requirements are needed, it can be customized.

Lifetime Characteristics		
Mechanical Life	300,000 times	
Resistive Load Life (L/R≤1ms)	250A500V:6000 times 250A750V:3000 times 250A1000V:1000 times 120A1200V:1000 times 80A1500V:1000 times	
Capacitive Load Life (RC=1ms, Connected)	600A	50,000 times
<p>Note: Capacitive load description: When the contactor is used for charging and discharging main circuit control, a pre charging circuit should be added; If there is no pre charging circuit, transient high current will be generated at the moment of contactor closure, which may cause the contactor to stick.</p>		

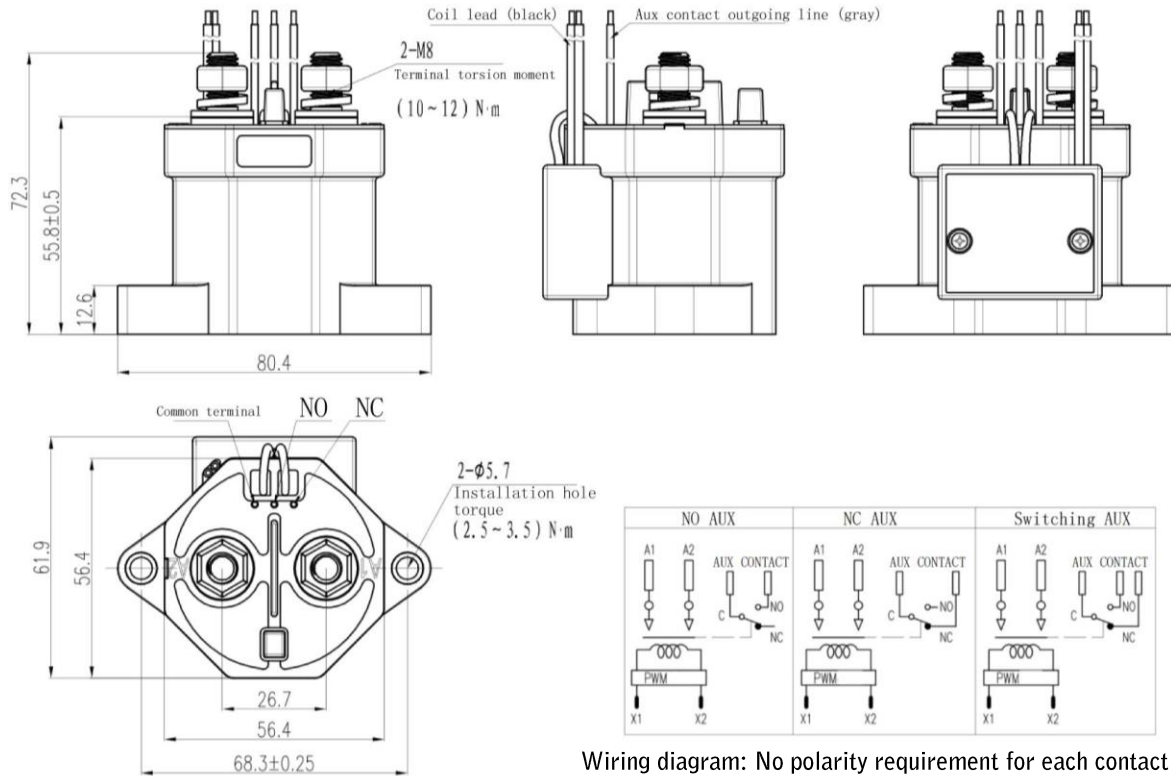
Environmental Characteristics		
Impact Resistance	Stability Test	196m/s ² (20G)
	Strength Testing	490m/s ² (50G)
Anti Vibration		10~2000Hz, 20G
Ambient Temperature		-40°C~+85°C
Working Environment Humidity		5%~85% RH
Protection Grade		IP67 (Internal Space)
Applicable Altitude		≤4000m
Electrical Characteristics		
Dielectric Withstand Voltage		AC3000V
Insulation Resistance		≥1000MΩ@1000VDC
Rated Insulation Voltage Ui		1000V
Other Characteristics		
Weight		425g, 430g with Auxiliary
Cross Sectional Area of External Conductor		≥75mm ²
Housing Mounting Hole Torque		2.5~3.5 N·m

● SHORT TIME OVERLOAD CAPACITY CURVE

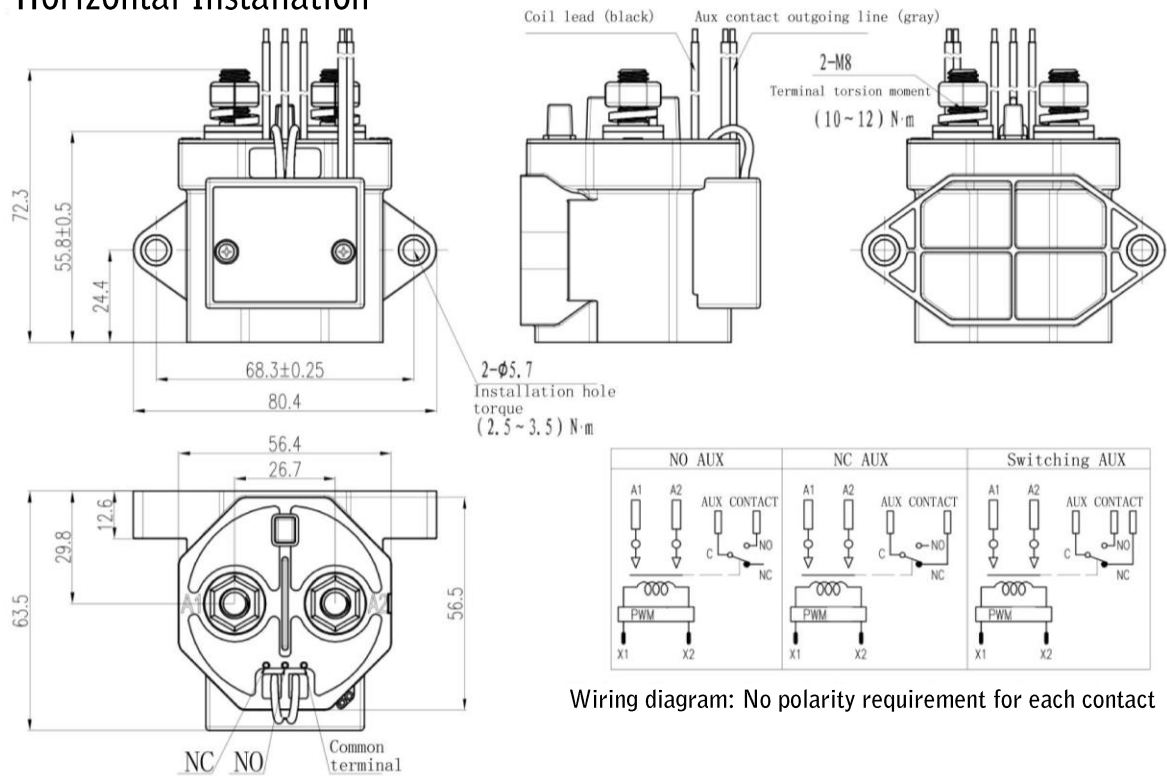


● PRODUCT APPEARANCE AND WIRING SCHEMATIC DIAGRAM

Vertical Installation



Horizontal Installation



Note: The length of the control coil wire is 300 ± 20mm;
The product does not indicate tolerance dimensions, and when ≤ 10mm, the tolerance is ± 0.3mm;
When the size is between (10-50) mm, the tolerance is ± 0.5mm;
When the size is ≥ 50mm, the tolerance is ± 0.8mm.

● NOTES

1. When installing contactors, washers should be used to prevent screws from loosening.
2. The torque range for tightening screws is specified below. Exceeding the maximum torque value can cause product breakage.
3. There are no polarity requirements for the main contact and control coil leads of this contactor.
4. Products with energy-saving boards are equipped with a reverse surge absorption circuit, so there is no need to use surge protectors. We recommend installing varistors as surge protectors for products without energy-saving boards. Diodes should be avoided as this will reduce the product's cutoff energy.
5. Do not use dropped products.
6. Avoid installing the product in areas with strong magnetic fields (near transformers or magnets) or near objects with thermal radiation.
7. **Electrical lifespan**
This contactor is a high-voltage DC switch, and in its final breakdown mode, it may lose its proper cut-off function. Therefore, do not use it in a state that exceeds its switching capacity and lifespan parameters (please treat this contactor as a product with a specified lifespan and replace it if necessary). Once the contactor loses its ability to disconnect and cut off, it may not work properly. Therefore, it is necessary to design a circuit diagram to ensure that the power supply can be cut off within 1 second. This contactor adopts sealed chamber contacts, which are filled with gas. The diffusion life of the gas is determined by the temperature inside the contact chamber (ambient temperature + temperature rise generated by contact electrification), so it should be ensured that the ambient temperature is -40 to +85.
8. **Diffusion Life of Internal Gas**
9. If the coil and contact of the contactor are continuously connected to the rated voltage (or current), and the power is cut off and immediately connected, the resistance of the coil will increase due to the increase in coil temperature, which may cause the product's pull-in voltage to increase, potentially exceeding the rated pull-in voltage. In this case, the following measures should be taken: such as reducing the load current, Limit the continuous power on time or use a coil voltage higher than the rated pull-in voltage.
10. When resistive load is applied, the rated parameters of the main contact in the rated value are applicable. If inductive load (L load) is used and L/R is greater than 1 millisecond, a surge current protection device should be connected in parallel for the inductive load.
11. The driving circuit power of the product coil must be greater than the power of the product coil, otherwise it will reduce the cutting capacity of the product.
12. Be careful not to let debris and oil stains get on the main outlet, and the external wiring terminal should be in reliable contact with the main outlet of the product, otherwise it may cause severe heating at the outlet. Please connect various wire harnesses and busbars according to the following methods.
13. For products with energy-saving boards, after about 0.1 seconds of connection, the coil will automatically switch. Do not repeatedly turn off at that position, as this may damage the contactor.

● ABOUT US

Component Basics ("CBV") datasheets are solely intended to assist designers ("Buyers") who are developing systems that incorporate CBV products (also referred to herein as "components"). Buyer understands and agrees that Buyer remains responsible for using its independent analysis, valuation, and judgment in designing Buyer's systems and products. CBV datasheets have

been created using standard laboratory conditions and engineering practices. CBV has not conducted any testing other than that specifically described in the published documentation for a particular datasheet. CBV may make corrections, enhancements, improvements, and other changes to its datasheets or components without notice.

Buyers are authorized to use CBV datasheets with the CBV component(s) identified in each particular datasheet. HOWEVER, NO OTHER LICENSE, EXPRESS OR IMPLIED, BY ESTOPPEL OR OTHERWISE TO ANY OTHER CBV INTELLECTUAL PROPERTY RIGHT, AND NO LICENSE TO ANY THIRD PARTY TECHNOLOGY OR INTELLECTUAL PROPERTY RIGHT, IS GRANTED HEREIN. CBV DATASHEETS ARE PROVIDED "AS IS". CBV MAKES NO WARRANTIES OR REPRESENTATIONS WITH REGARD TO THE DATASHEETS OR USE OF THE DATASHEETS, EXPRESS, IMPLIED, OR STATUTORY, INCLUDING ACCURACY OR COMPLETENESS. CBV DISCLAIMS ANY WARRANTY OF TITLE AND ANY IMPLIED WARRANTIES OF MERCHANTABILITY, FITNESS FOR A PARTICULAR PURPOSE, QUIET ENJOYMENT, QUIET POSSESSION, AND NON-INFRINGEMENT OF ANY THIRD PARTY INTELLECTUAL PROPERTY RIGHTS WITH REGARD TO CBV DATASHEETS OR USE THEREOF.

All products are sold subject to CBV's terms and conditions of sale supplied at www.componentbasics.com. CBV ASSUMES NO LIABILITY FOR APPLICATIONS ASSISTANCE OR THE DESIGN OF BUYERS' PRODUCTS. BUYER ACKNOWLEDGES AND AGREES THAT IT IS SOLELY RESPONSIBLE FOR COMPLIANCE WITH ALL LEGAL, REGULATORY, AND SAFETY-RELATED REQUIREMENTS CONCERNING ITS PRODUCTS, AND ANY USE OF CBV COMPONENTS IN ITS APPLICATIONS, NOTWITHSTANDING ANY APPLICATIONS-RELATED INFORMATION OR SUPPORT THAT MAY BE PROVIDED BY CBV.

Mailing Address: Component Basics, 1539, 35-Viking Lane, Toronto, M9B 0A2, ON, Canada.

● CONTACT US

COMPONENT BASICS

1539, 35-Viking Lane, Toronto

M9B 0A2, ON, Canada

Tel.: +1 437 4229280

Email: info@componentbasics.com